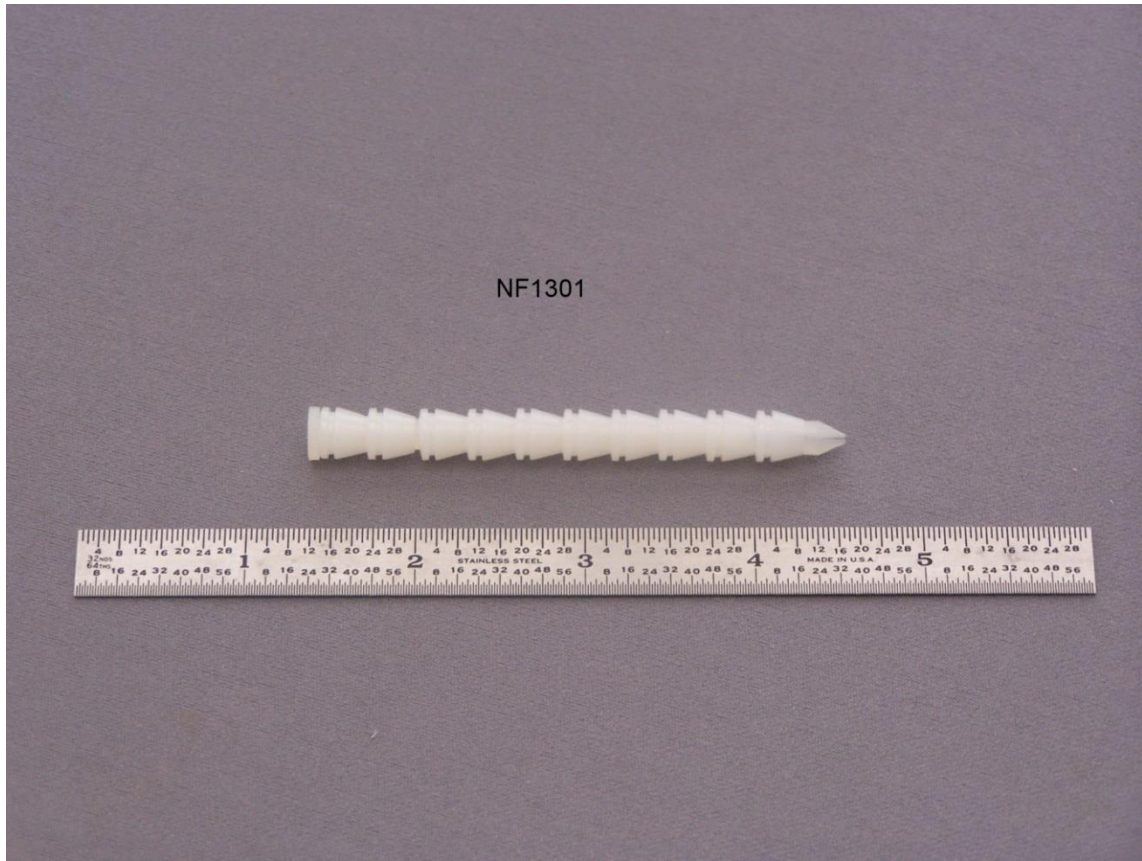


Nylon Probe Ferrules (set of 10) Part Number NF1301



This item consists of a set of 10 ferrule sets. Each set consists of a flat stepped ferrule and a graduate ferrule. **Nylon Probe Ferrules** are used to form a seal between a **Sentry Probe** and an adapter when the Swagelok nut is tightened. It is used on all probe-to-container adapters.